



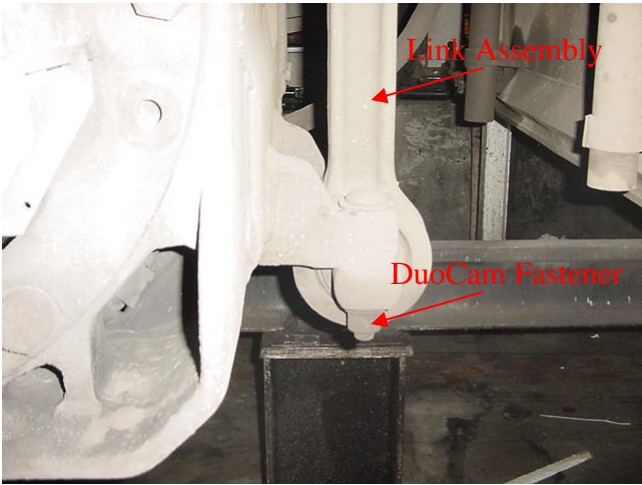
Patent Pending

Vibration Resistant Fastening System

TRACTION MOTOR LINK ASSEMBLY

Features:

- Fastens the traction motor link assembly. (Also known as a “dog-bone”.)
- Non-loosening/vibration resistant system.
- TC bolt guarantees clamp load is achieved.
- Simple, one-man installation.
- Easy visual inspection.
- No heavy installation equipment needed.
- Suitable for EMD SD70 and SD75 locomotives only.
- Replaces EMD parts 40034492 & 40034493.



Description:



DuoCam Nut

- 1” Nominal Diameter
- Grade 8 Steel (DIN Class 10)

Tension Control Bolt

- 1” Nominal Thread Diameter
- ASTM Grade A325 (Gr 5) or A490 (Gr 8)
- Spline shears-off at designed tension.

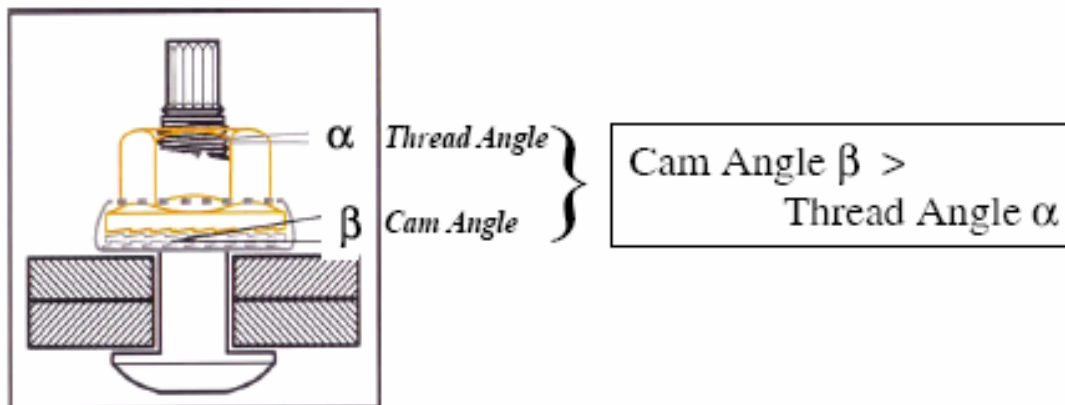
Part Number	Description
DC0108-3A	1”- 8 DuoCam Nut, Non Serrated
DCAM-8B	1” x 6-1/2” TC Bolt, Button Head, A325

For more information, contact Ronsco Inc. Tel: (514) 866-1033

How DuoCam Works:

DC03

Once installed, the DuoCam nut will not loosen. Cam angle β is greater than Thread pitch angle α , and as a result the relationship between the two angles produce a wedge action which prevents loosening. Due to the difference of these angles, the nut is automatically locked.

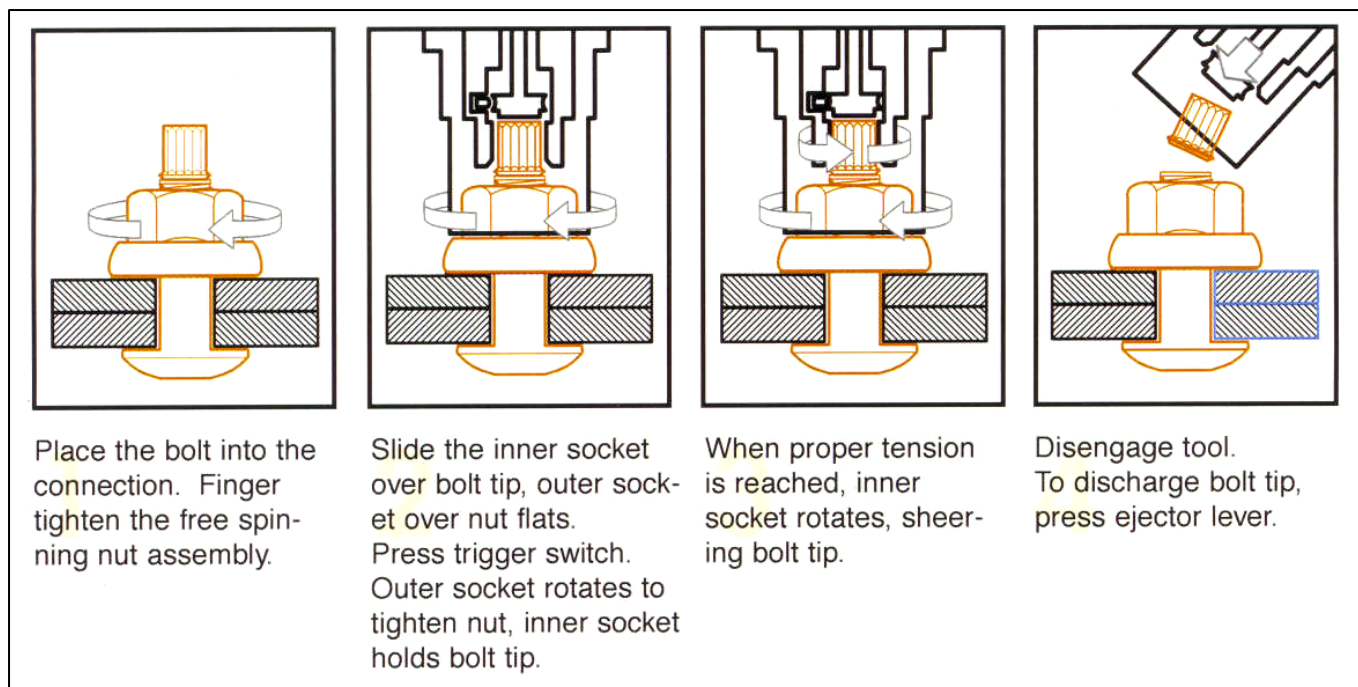


Installation:

S90EZ Shear Wrench



- Heavy duty, electric wrench
- Light weight (only 16.7 lbs).
- Very easy to use, one man installation.
- No calibration required.
- Little tool maintenance required.
- Shears off bolt spline at designed tension.
- Includes DuoCam socket (special design).



For more information, contact Ronsco Inc. Tel: (514) 866-1033